



Mercato
Mercati nazionali

5.7.10.2



CREMONA 2000

CAMERA DI COMMERCIO DI CREMONA

Categoria: SUINI VIVI

Prezzi: (Franco Partenza) Per Kg peso vivo - IVA esclusa

di Cosmino Giovanni Basile

| SETTIMANE | SUINI D'ALLEVAMENTO €/Kg) | | | | | | | |
|--------------|---------------------------|-------------|-------------|-------------|-------------|-------------|-------------|-------------|
| | < a 15 | da 25 | da 30 | da 40 | da 50 | da 65 | da 80 | da 100 |
| 05/01/2000 | nq | 2,27 | 2,12 | 1,68 | 1,52 | 1,37 | 1,27 | 1,27 |
| 12/01/2000 | nq | 2,35 | 2,19 | 1,73 | 1,55 | 1,37 | 1,27 | 1,27 |
| 19/01/2000 | nq | 2,40 | 2,25 | 1,76 | 1,55 | 1,37 | 1,27 | 1,27 |
| 26/01/2000 | nq | 2,40 | 2,25 | 1,76 | 1,55 | 1,37 | 1,27 | 1,27 |
| 02/02/2000 | nq | 2,40 | 2,25 | 1,76 | 1,55 | 1,37 | 1,27 | 1,27 |
| 09/02/2000 | nq | 2,40 | 2,25 | 1,76 | 1,55 | 1,37 | 1,27 | 1,27 |
| 16/02/2000 | nq | 2,48 | 2,32 | 1,83 | 1,60 | 1,37 | 1,27 | 1,27 |
| 23/02/2000 | nq | 2,58 | 2,40 | 1,91 | 1,65 | 1,37 | 1,27 | 1,27 |
| 01/03/2000 | nq | 2,58 | 2,40 | 1,91 | 1,65 | 1,37 | 1,27 | 1,27 |
| 08/03/2000 | nq | 2,61 | 2,43 | 1,94 | 1,68 | 1,39 | 1,29 | 1,29 |
| 15/03/2000 | nq | 2,61 | 2,43 | 1,94 | 1,68 | 1,39 | 1,29 | 1,29 |
| 22/03/2000 | nq | 2,63 | 2,43 | 1,96 | 1,70 | 1,42 | 1,29 | 1,29 |
| 29/03/2000 | nq | 2,66 | 2,45 | 2,01 | 1,76 | 1,47 | 1,29 | 1,29 |
| 05/04/2000 | nq | 2,66 | 2,45 | 2,04 | 1,78 | 1,50 | 1,29 | 1,29 |
| 12/04/2000 | nq | 2,66 | 2,45 | 2,04 | 1,78 | 1,50 | 1,29 | 1,29 |
| 19/04/2000 | nq | 2,66 | 2,45 | 2,04 | 1,78 | 1,50 | 1,29 | 1,29 |
| 26/04/2000 | nq | 2,66 | 2,45 | 2,04 | 1,78 | 1,50 | 1,29 | 1,29 |
| 03/05/2000 | nq | 2,66 | 2,45 | 2,04 | 1,78 | 1,50 | 1,29 | 1,29 |
| 10/05/2000 | nq | 2,58 | 2,43 | 2,04 | 1,78 | 1,55 | 1,34 | 1,34 |
| 17/05/2000 | nq | 2,58 | 2,43 | 2,04 | 1,78 | 1,55 | 1,34 | 1,34 |
| 24/05/2000 | nq | 2,48 | 2,38 | 2,04 | 1,81 | 1,58 | 1,34 | 1,34 |
| 31/05/2000 | nq | 2,43 | 2,32 | 2,01 | 1,81 | 1,58 | 1,34 | 1,34 |
| 07/06/2000 | nq | 2,38 | 2,30 | 1,99 | 1,81 | 1,58 | 1,34 | 1,34 |
| 14/06/2000 | nq | 2,32 | 2,25 | 1,99 | 1,81 | 1,58 | 1,32 | 1,32 |
| 21/06/2000 | nq | 2,32 | 2,25 | 1,99 | 1,83 | 1,60 | 1,32 | 1,32 |
| 28/06/2000 | nq | 2,32 | 2,25 | 2,04 | 1,89 | 1,63 | 1,32 | 1,32 |
| 05/07/2000 | nq | 2,32 | 2,25 | 2,04 | 1,91 | 1,65 | 1,32 | 1,32 |
| 12/07/2000 | nq | 2,35 | 2,27 | 2,07 | 1,94 | 1,68 | 1,34 | 1,32 |
| 19/07/2000 | nq | 2,40 | 2,32 | 2,12 | 1,99 | 1,73 | 1,39 | 1,37 |
| 26/07/2000 | nq | 2,45 | 2,38 | 2,17 | 2,04 | 1,78 | 1,45 | 1,42 |
| 02/08/2000 | nq | 2,48 | 2,40 | 2,19 | 2,07 | 1,81 | 1,47 | 1,45 |
| 09/08/2000 | nq | 2,48 | 2,40 | 2,19 | 2,07 | 1,81 | 1,47 | 1,45 |
| 30/08/2000 | nq | 2,43 | 2,35 | 2,17 | 2,04 | 1,78 | 1,45 | 1,42 |
| 06/09/2000 | nq | 2,38 | 2,30 | 2,12 | 1,99 | 1,73 | 1,39 | 1,37 |
| 13/09/2000 | nq | 2,32 | 2,25 | 2,07 | 1,94 | 1,68 | 1,37 | 1,34 |
| 20/09/2000 | nq | 2,27 | 2,19 | 2,01 | 1,89 | 1,63 | 1,37 | 1,34 |
| 27/09/2000 | nq | 2,25 | 2,17 | 1,99 | 1,89 | 1,63 | 1,37 | 1,34 |
| 04/10/2000 | nq | 2,19 | 2,12 | 1,94 | 1,86 | 1,60 | 1,34 | 1,32 |
| 11/10/2000 | nq | 2,17 | 2,09 | 1,91 | 1,83 | 1,60 | 1,34 | 1,32 |
| 18/10/2000 | nq | 2,17 | 2,09 | 1,91 | 1,83 | 1,60 | 1,34 | 1,32 |
| 25/10/2000 | nq | 2,17 | 2,09 | 1,91 | 1,83 | 1,60 | 1,34 | 1,32 |
| 08/11/2000 | nq | 2,22 | 2,12 | 1,94 | 1,83 | 1,60 | 1,34 | 1,32 |
| 15/11/2000 | nq | 2,27 | 2,17 | 1,96 | 1,83 | 1,60 | 1,34 | 1,32 |
| 22/11/2000 | nq | 2,38 | 2,25 | 2,01 | 1,89 | 1,65 | 1,39 | 1,37 |
| 29/11/2000 | nq | 2,53 | 2,38 | 2,12 | 1,94 | 1,70 | 1,45 | 1,42 |
| 06/12/2000 | nq | 2,63 | 2,45 | 2,19 | 1,99 | 1,73 | 1,50 | 1,47 |
| 13/12/2000 | nq | 2,63 | 2,45 | 2,19 | 1,99 | 1,73 | 1,50 | 1,47 |
| 20/12/2000 | nq | 2,71 | 2,50 | 2,25 | 2,01 | 1,76 | 1,50 | 1,47 |
| MEDIA | nq | 2,44 | 2,31 | 1,99 | 1,81 | 1,57 | 1,34 | 1,33 |

nq = non quotati

CREMONA 2000

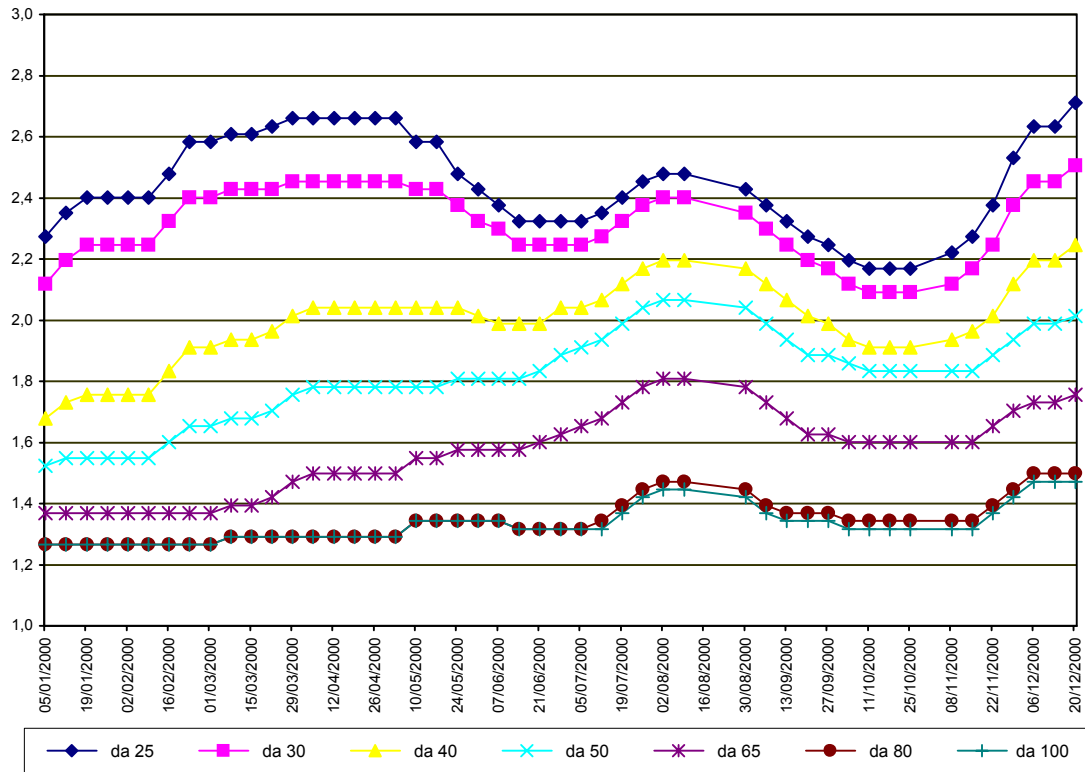
| SETTIMANE | SUINI DA MACELLO (€/Kg) | | | | | | | > 185 |
|--------------|-------------------------|-----------|--------------|--------------|--------------|--------------|--------------|--------------|
| | 90/115 | 115/130 | 130/144 | 144/156 | 156/176 | 176/180 | 180/185 | |
| 05/01/2000 | nq | nq | 1,183 | 1,224 | 1,255 | 1,209 | 1,136 | 1,100 |
| 12/01/2000 | nq | nq | 1,147 | 1,188 | 1,219 | 1,172 | 1,100 | 1,064 |
| 19/01/2000 | nq | nq | 1,095 | 1,136 | 1,167 | 1,121 | 1,048 | 1,012 |
| 26/01/2000 | nq | nq | 1,064 | 1,105 | 1,136 | 1,090 | 1,017 | 0,981 |
| 02/02/2000 | nq | nq | 1,059 | 1,100 | 1,131 | 1,085 | 1,012 | 0,976 |
| 09/02/2000 | nq | nq | 1,064 | 1,105 | 1,136 | 1,090 | 1,017 | 0,981 |
| 16/02/2000 | nq | nq | 1,12 | 1,16 | 1,19 | 1,14 | 1,07 | 1,03 |
| 23/02/2000 | nq | nq | 1,131 | 1,172 | 1,203 | 1,157 | 1,085 | 1,048 |
| 01/03/2000 | nq | nq | 1,105 | 1,147 | 1,178 | 1,131 | 1,059 | 1,023 |
| 08/03/2000 | nq | nq | 1,090 | 1,131 | 1,162 | 1,116 | 1,043 | 1,007 |
| 15/03/2000 | nq | nq | 1,095 | 1,136 | 1,167 | 1,121 | 1,048 | 1,012 |
| 22/03/2000 | nq | nq | 1,095 | 1,136 | 1,167 | 1,121 | 1,048 | 1,012 |
| 29/03/2000 | nq | nq | 1,069 | 1,110 | 1,141 | 1,095 | 1,023 | 0,986 |
| 05/04/2000 | nq | nq | 1,038 | 1,079 | 1,110 | 1,064 | 0,992 | 0,955 |
| 12/04/2000 | nq | nq | 1,007 | 1,048 | 1,079 | 1,033 | 0,961 | 0,924 |
| 19/04/2000 | nq | nq | 1,007 | 1,048 | 1,079 | 1,033 | 0,961 | 0,924 |
| 26/04/2000 | nq | nq | 1,012 | 1,054 | 1,085 | 1,038 | 0,966 | 0,930 |
| 03/05/2000 | nq | nq | 1,012 | 1,054 | 1,085 | 1,038 | 0,966 | 0,930 |
| 10/05/2000 | nq | nq | 1,012 | 1,054 | 1,085 | 1,038 | 0,966 | 0,930 |
| 17/05/2000 | nq | nq | 1,012 | 1,054 | 1,085 | 1,038 | 0,966 | 0,930 |
| 24/05/2000 | nq | nq | 0,971 | 1,017 | 1,017 | 0,961 | 0,930 | 0,904 |
| 31/05/2000 | nq | nq | 0,930 | 0,986 | 0,981 | 0,909 | 0,878 | 0,852 |
| 07/06/2000 | nq | nq | 0,930 | 0,986 | 0,976 | 0,909 | 0,878 | 0,852 |
| 14/06/2000 | nq | nq | 0,930 | 0,986 | 0,986 | 0,924 | 0,878 | 0,852 |
| 21/06/2000 | nq | nq | 0,976 | 1,033 | 1,033 | 0,971 | 0,924 | 0,899 |
| 28/06/2000 | nq | nq | 1,038 | 1,095 | 1,095 | 1,085 | 0,986 | 0,961 |
| 05/07/2000 | nq | nq | 1,043 | 1,100 | 1,100 | 1,090 | 0,992 | 0,966 |
| 12/07/2000 | nq | nq | 1,048 | 1,105 | 1,105 | 1,095 | 0,997 | 0,971 |
| 19/07/2000 | nq | nq | 1,131 | 1,188 | 1,188 | 1,178 | 1,079 | 1,054 |
| 26/07/2000 | nq | nq | 1,214 | 1,270 | 1,270 | 1,260 | 1,162 | 1,136 |
| 02/08/2000 | nq | nq | 1,224 | 1,281 | 1,281 | 1,270 | 1,172 | 1,147 |
| 09/08/2000 | nq | nq | 1,234 | 1,291 | 1,291 | 1,281 | 1,183 | 1,157 |
| 30/08/2000 | nq | nq | 1,286 | 1,343 | 1,343 | 1,332 | 1,234 | 1,198 |
| 06/09/2000 | nq | nq | 1,265 | 1,327 | 1,332 | 1,327 | 1,229 | 1,193 |
| 13/09/2000 | nq | nq | 1,265 | 1,327 | 1,338 | 1,332 | 1,234 | 1,193 |
| 20/09/2000 | nq | nq | 1,338 | 1,400 | 1,410 | 1,405 | 1,307 | 1,265 |
| 27/09/2000 | nq | nq | 1,338 | 1,400 | 1,410 | 1,405 | 1,307 | 1,265 |
| 04/10/2000 | nq | nq | 1,307 | 1,369 | 1,379 | 1,374 | 1,276 | 1,234 |
| 11/10/2000 | nq | nq | 1,330 | 1,392 | 1,402 | 1,397 | 1,299 | 1,258 |
| 18/10/2000 | nq | nq | 1,363 | 1,425 | 1,436 | 1,431 | 1,332 | 1,291 |
| 25/10/2000 | nq | nq | 1,343 | 1,405 | 1,415 | 1,410 | 1,312 | 1,270 |
| 08/11/2000 | nq | nq | 1,343 | 1,405 | 1,415 | 1,410 | 1,312 | 1,270 |
| 15/11/2000 | nq | nq | 1,363 | 1,425 | 1,436 | 1,431 | 1,332 | 1,291 |
| 22/11/2000 | nq | nq | 1,420 | 1,482 | 1,493 | 1,487 | 1,389 | 1,348 |
| 29/11/2000 | nq | nq | 1,477 | 1,539 | 1,549 | 1,544 | 1,446 | 1,405 |
| 06/12/2000 | nq | nq | 1,472 | 1,534 | 1,544 | 1,539 | 1,441 | 1,400 |
| 13/12/2000 | nq | nq | 1,472 | 1,534 | 1,544 | 1,539 | 1,441 | 1,400 |
| 20/12/2000 | nq | nq | 1,472 | 1,534 | 1,544 | 1,539 | 1,441 | 1,400 |
| MEDIA | nq | nq | 1,162 | 1,214 | 1,230 | 1,200 | 1,119 | 1,084 |

nq = non quotati

CREMONA 2000

SUINI D'ALLEVAMENTO

(Euro/Kg)



CREMONA 2000
SUINI DA MACELLO
 (Euro/Kg)

