



MODENA 2008

CAMERA DI COMMERCIO DI MODENA

Categoria: SUINI VIVI

Prezzi: (Franco Partenza) Per Kg peso vivo - IVA esclusa

di Cosmino Giovanni Basile

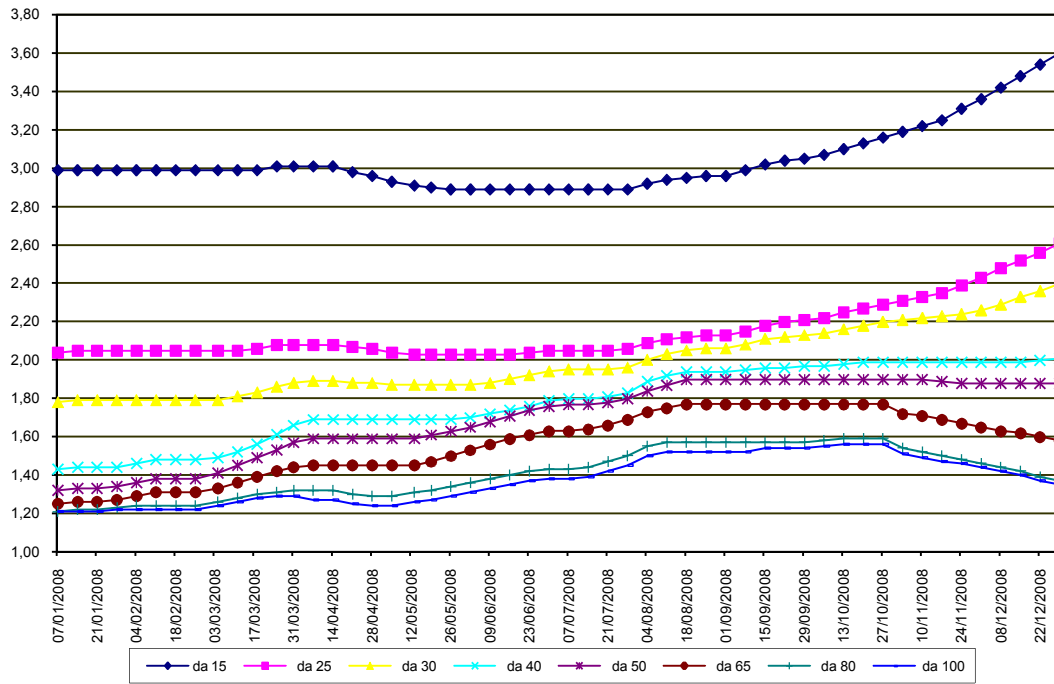
SETTIMANE	SUINI D'ALLEVAMENTO (€/Kg)									
	da 6	da 8	da 15	da 25	da 30	da 40	da 50	da 65	da 80	da 100
07/01/2008	5,74	4,57	2,99	2,04	1,78	1,43	1,32	1,25	1,21	1,21
14/01/2008	5,70	4,53	2,99	2,05	1,79	1,44	1,33	1,26	1,22	1,21
21/01/2008	5,70	4,53	2,99	2,05	1,79	1,44	1,33	1,26	1,22	1,21
28/01/2008	5,65	4,50	2,99	2,05	1,79	1,44	1,34	1,27	1,23	1,22
04/02/2008	5,62	4,47	2,99	2,05	1,79	1,46	1,36	1,29	1,24	1,22
11/02/2008	5,59	4,44	2,99	2,05	1,79	1,48	1,38	1,31	1,24	1,22
18/02/2008	5,59	4,44	2,99	2,05	1,79	1,48	1,38	1,31	1,24	1,22
25/02/2008	5,59	4,44	2,99	2,05	1,79	1,48	1,38	1,31	1,24	1,22
04/03/2008	5,55	4,40	2,99	2,05	1,79	1,49	1,41	1,33	1,26	1,24
11/03/2008	5,55	4,40	2,99	2,05	1,81	1,52	1,45	1,36	1,28	1,26
18/03/2008	5,55	4,40	2,99	2,06	1,83	1,56	1,49	1,39	1,30	1,28
25/03/2008	5,53	4,38	3,01	2,08	1,86	1,61	1,53	1,42	1,31	1,29
31/03/2008	5,53	4,38	3,01	2,08	1,88	1,66	1,57	1,44	1,32	1,29
07/04/2008	5,49	4,35	3,01	2,08	1,89	1,69	1,59	1,45	1,32	1,27
14/04/2008	5,49	4,35	3,01	2,08	1,89	1,69	1,59	1,45	1,32	1,27
21/04/2008	5,44	4,31	2,98	2,07	1,88	1,69	1,59	1,45	1,30	1,25
28/04/2008	5,40	4,28	2,96	2,06	1,88	1,69	1,59	1,45	1,29	1,24
05/05/2008	5,35	4,23	2,93	2,04	1,87	1,69	1,59	1,45	1,29	1,24
13/05/2008	5,31	4,19	2,91	2,03	1,87	1,69	1,59	1,45	1,31	1,26
19/05/2008	5,28	4,16	2,90	2,03	1,87	1,69	1,61	1,47	1,32	1,27
26/05/2008	5,25	4,14	2,89	2,03	1,87	1,69	1,63	1,50	1,34	1,29
02/06/2008	5,22	4,11	2,89	2,03	1,87	1,70	1,65	1,53	1,36	1,31
09/06/2008	5,18	4,08	2,89	2,03	1,88	1,72	1,68	1,56	1,38	1,33
16/06/2008	5,13	4,05	2,89	2,03	1,90	1,74	1,71	1,59	1,40	1,35
23/06/2008	5,08	4,00	2,89	2,04	1,92	1,76	1,74	1,61	1,42	1,37
30/06/2008	5,03	3,95	2,89	2,05	1,94	1,79	1,76	1,63	1,43	1,38
07/07/2008	4,98	3,89	2,89	2,05	1,95	1,80	1,77	1,63	1,43	1,38
14/07/2008	4,92	3,82	2,89	2,05	1,95	1,80	1,77	1,64	1,44	1,39
21/07/2008	4,86	3,79	2,89	2,05	1,95	1,81	1,78	1,66	1,47	1,42
28/07/2008	4,81	3,76	2,89	2,06	1,96	1,83	1,80	1,69	1,50	1,45
04/08/2008	4,89	3,84	2,92	2,09	2,00	1,89	1,84	1,73	1,55	1,50
11/08/2008	4,94	3,89	2,94	2,11	2,03	1,92	1,87	1,75	1,57	1,52
18/08/2008	4,98	3,93	2,95	2,12	2,05	1,94	1,90	1,77	1,57	1,52
25/08/2008	5,01	3,95	2,96	2,13	2,06	1,94	1,90	1,77	1,57	1,52
01/09/2008	5,01	3,95	2,96	2,13	2,06	1,94	1,90	1,77	1,57	1,52
08/09/2008	5,05	3,98	2,99	2,15	2,08	1,95	1,90	1,77	1,57	1,52
15/09/2008	5,10	4,02	3,02	2,18	2,11	1,96	1,90	1,77	1,57	1,54
22/09/2008	5,12	4,04	3,04	2,20	2,12	1,96	1,90	1,77	1,57	1,54
29/09/2008	5,16	4,07	3,05	2,21	2,13	1,97	1,90	1,77	1,57	1,54
06/10/2008	5,21	4,11	3,07	2,22	2,14	1,97	1,90	1,77	1,58	1,55
13/10/2008	5,27	4,16	3,10	2,25	2,16	1,98	1,90	1,77	1,59	1,56
20/10/2008	5,31	4,19	3,13	2,27	2,18	1,99	1,90	1,77	1,59	1,56
27/10/2008	5,36	4,23	3,16	2,29	2,20	1,99	1,90	1,77	1,59	1,56
03/11/2008	5,41	4,27	3,19	2,31	2,21	1,99	1,90	1,72	1,54	1,51
10/11/2008	5,46	4,31	3,22	2,33	2,22	1,99	1,90	1,71	1,52	1,49
17/11/2008	5,56	4,39	3,25	2,35	2,23	1,99	1,89	1,69	1,50	1,47
24/11/2008	5,66	4,48	3,31	2,39	2,24	1,99	1,88	1,67	1,48	1,46
01/12/2008	5,76	4,58	3,36	2,43	2,26	1,99	1,88	1,65	1,46	1,44
08/12/2008	5,86	4,66	3,42	2,48	2,29	1,99	1,88	1,63	1,44	1,42
15/12/2008	5,96	4,74	3,48	2,52	2,33	1,99	1,88	1,62	1,42	1,40
22/12/2008	6,06	4,82	3,54	2,56	2,36	2,00	1,88	1,60	1,39	1,37
29/12/2008	6,16	4,90	3,60	2,61	2,40	2,01	1,88	1,58	1,37	1,35
MEDIA	5,37	4,25	3,04	2,15	1,99	1,78	1,70	1,56	1,41	1,37

ns = non significativi

MODENA 2008

SETTIMANE	SUINI DA MACELLO (€/Kg)							
	90/115	115/130	130/144	144/156	156/176	176/180	180/185	> 185
07/01/2008	1,250	1,107	1,117	1,142	1,180	1,135	1,110	1,070
14/01/2008	1,252	1,109	1,119	1,144	1,182	1,137	1,112	1,072
21/01/2008	1,298	1,155	1,165	1,190	1,228	1,183	1,158	1,118
28/01/2008	1,360	1,217	1,227	1,252	1,290	1,245	1,220	1,180
04/02/2008	1,325	1,182	1,192	1,217	1,255	1,210	1,185	1,145
11/02/2008	1,280	1,122	1,132	1,157	1,195	1,150	1,125	1,085
18/02/2008	1,280	1,087	1,097	1,122	1,160	1,115	1,090	1,050
25/02/2008	1,290	1,097	1,107	1,132	1,170	1,125	1,100	1,060
04/03/2008	1,360	1,157	1,167	1,192	1,230	1,185	1,160	1,120
11/03/2008	1,380	1,177	1,187	1,212	1,250	1,205	1,180	1,140
18/03/2008	1,380	1,177	1,187	1,212	1,250	1,205	1,180	1,140
25/03/2008	1,380	1,167	1,177	1,202	1,240	1,195	1,170	1,130
31/03/2008	1,380	1,122	1,132	1,157	1,195	1,150	1,125	1,085
07/04/2008	1,340	1,082	1,092	1,117	1,155	1,110	1,085	1,045
14/04/2008	1,270	1,012	1,022	1,047	1,085	1,040	1,015	0,975
21/04/2008	1,240	0,962	0,972	0,997	1,035	0,990	0,965	0,925
28/04/2008	1,250	0,967	0,977	1,002	1,040	0,995	0,970	0,930
05/05/2008	1,285	1,002	1,012	1,037	1,075	1,030	1,005	0,965
13/05/2008	1,350	1,067	1,077	1,102	1,140	1,095	1,070	1,030
19/05/2008	1,400	1,132	1,142	1,167	1,205	1,160	1,135	1,095
26/05/2008	1,400	1,135	1,145	1,170	1,208	1,163	1,138	1,098
02/06/2008	1,420	1,152	1,162	1,187	1,225	1,180	1,155	1,115
09/06/2008	1,450	1,200	1,210	1,235	1,270	1,225	1,200	1,160
16/06/2008	1,470	1,240	1,250	1,270	1,300	1,260	1,230	1,190
23/06/2008	1,470	1,240	1,250	1,270	1,300	1,260	1,230	1,190
30/06/2008	1,470	1,240	1,250	1,270	1,300	1,260	1,230	1,190
07/07/2008	1,445	1,215	1,225	1,245	1,275	1,235	1,205	1,165
14/07/2008	1,445	1,215	1,225	1,245	1,275	1,235	1,205	1,165
21/07/2008	1,490	1,275	1,285	1,305	1,335	1,295	1,265	1,225
28/07/2008	1,500	1,365	1,375	1,395	1,425	1,385	1,355	1,315
04/08/2008	1,590	1,430	1,440	1,460	1,490	1,450	1,420	1,380
11/08/2008	1,590	1,430	1,440	1,460	1,490	1,450	1,420	1,380
18/08/2008	1,585	1,425	1,435	1,455	1,485	1,445	1,415	1,375
25/08/2008	1,565	1,405	1,415	1,435	1,465	1,425	1,395	1,355
01/09/2008	1,580	1,420	1,430	1,450	1,480	1,440	1,410	1,370
08/09/2008	1,650	1,505	1,515	1,535	1,565	1,525	1,495	1,455
15/09/2008	1,650	1,535	1,545	1,565	1,595	1,555	1,525	1,585
22/09/2008	1,630	1,515	1,525	1,545	1,575	1,535	1,505	1,465
29/09/2008	1,600	1,490	1,500	1,520	1,550	1,510	1,480	1,440
06/10/2008	1,610	1,505	1,515	1,535	1,565	1,530	1,495	1,455
13/10/2008	1,640	1,545	1,555	1,575	1,605	1,570	1,535	1,495
20/10/2008	1,640	1,545	1,555	1,575	1,605	1,570	1,535	1,495
27/10/2008	1,570	1,485	1,495	1,515	1,545	1,510	1,475	1,435
03/11/2008	1,470	1,390	1,400	1,420	1,450	1,415	1,380	1,340
10/11/2008	1,380	1,300	1,310	1,330	1,360	1,325	1,290	1,250
17/11/2008	1,380	1,305	1,315	1,335	1,365	1,330	1,295	1,255
24/11/2008	1,390	1,315	1,325	1,345	1,375	1,340	1,305	1,265
01/12/2008	1,345	1,270	1,280	1,300	1,330	1,295	1,260	1,220
08/12/2008	1,287	1,212	1,222	1,242	1,272	1,237	1,202	1,162
15/12/2008	1,217	1,190	1,200	1,220	1,250	1,215	1,180	1,140
22/12/2008	1,260	1,155	1,175	1,185	1,215	1,180	1,145	1,105
29/12/2008	1,265	1,155	1,175	1,190	1,220	1,185	1,150	1,110
MEDIA	1,419	1,248	1,259	1,280	1,314	1,273	1,244	1,206

MODENA 2008 SUINI D'ALLEVAMENTO (Euro/Kg)



MODENA 2008
SUINI DA MACELLO
 (Euro/Kg)

